

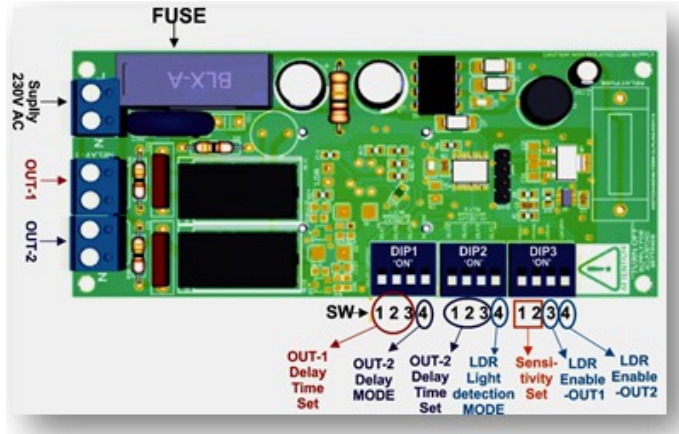
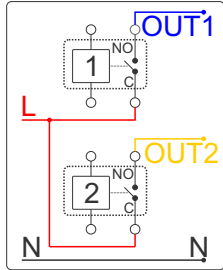
# Setup - Guide -

# Model - MP-AC1-R2



**PIR MOTION SENSOR (Microcontroller)**  
(LUX control / Dual Outputs with independent control)

Output relay config:



Manufactured by:  
**Custom Logics Pvt. Ltd.**  
www.biovibez.com  
sales@biovibez.com

**MADE IN INDIA**

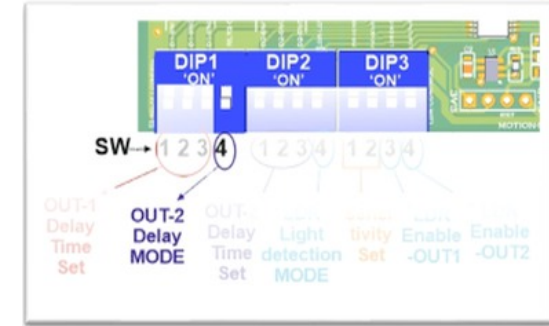
Customer care:  
+91 22 2508 4040  
customercare@biovibez.com

## 2

### OUT-2 Delay mode setting: -

(Using SW-4 of DIP1)

This setting decides the starting behaviour of OUT-2 delay timeout



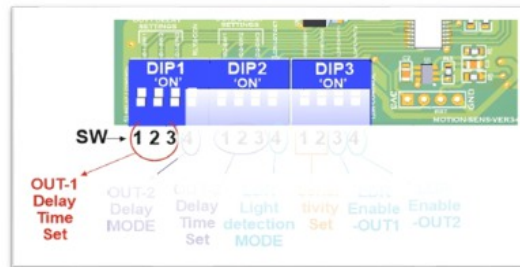
Sr. no.	DIP1-SW4	Delaymode
1	OFF	OUT-1 & OUT-2 delay timeout start <i>together</i>
2	ON	OUT-2 delay timeout starts <i>after</i> OUT-1 times out

## 1

### OUT-1 Delay time setting: -

(Using SW-1,2,3 of DIP1)

This setting decides any 1 out of 8 OUT-1 delay timeouts



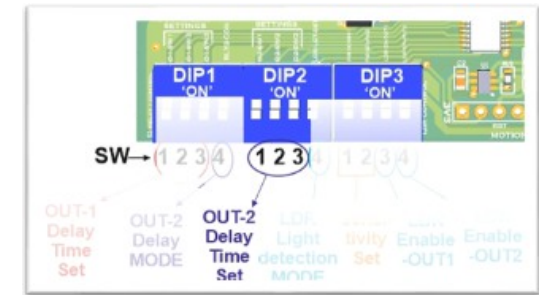
Sr. no.	DIP1-SW1	DIP1-SW2	DIP1-SW3	Delay interval (seconds)
1	OFF	OFF	OFF	10 seconds
2	OFF	OFF	ON	20 seconds
3	OFF	ON	OFF	30 seconds
4	OFF	ON	ON	60 seconds
5	ON	OFF	OFF	2 minutes
6	ON	OFF	ON	5 minutes
7	ON	ON	OFF	10 minutes
8	ON	ON	ON	30 minutes

## 3

### OUT-2 Delay time setting: -

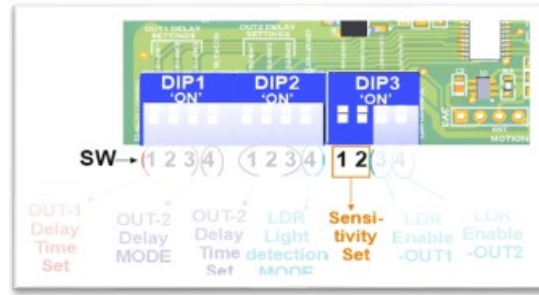
(Using SW-1,2,3 of DIP2)

This setting decides any 1 out of 8 OUT-2 delay timeouts



Sr. no.	DIP2-SW1	DIP2-SW2	DIP2-SW3	Delay interval (seconds)
1	OFF	OFF	OFF	10 seconds
2	OFF	OFF	ON	20 seconds
3	OFF	ON	OFF	30 seconds
4	OFF	ON	ON	60 seconds
5	ON	OFF	OFF	2 minutes
6	ON	OFF	ON	5 minutes
7	ON	ON	OFF	10 minutes
8	ON	ON	ON	30 minutes

4



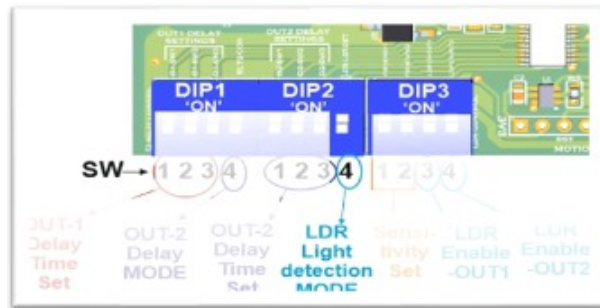
**Sensor sensitivity setting: -**

(Using SW-1&2 of DIP3)

The sensitivity setting sets the range / sensing distance

Sr. no.	DIP3-SW1	DIP3-SW2	Sensor Sensitivity %	Sensor Sensitivity
1	OFF	OFF	60%	LOW
2	OFF	ON	75%	Medium-Low
3	ON	OFF	85%	Medium-High
4	ON	ON	100%	Highest

5



**LDR-Ambient light detection mode: -**

(Using SW-4 of DIP2)

This setting allows **OUT-1** and/or **OUT-2** to be regulated with amount of ambient room lighting using LDR.

Note- LDR Enable OUT1 (SW-3 of DIP3) and LDR Enable OUT2 (SW-4 of DIP3) need to be set too.

Sr. no.	DIP2-SW4	LDR sensing - Mode	OUT-1 & OUT-2 Behaviour
1	OFF	Dark to dim	<b>OUT-1</b> &/or <b>OUT-2</b> will only operate if ambient lighting is in dark to dim range
2	ON	Medium	<b>OUT-1</b> &/or <b>OUT-2</b> will only operate if ambient lighting is in medium light range or less

6



**LDR-Enable OUT-1 setting: -**

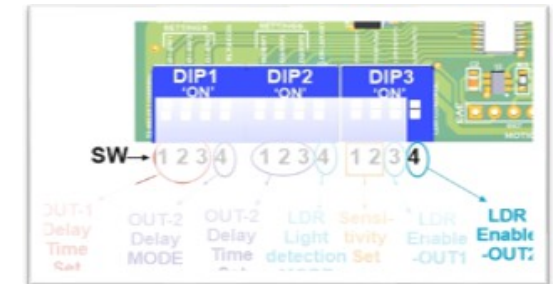
(Using SW-3 of DIP3)

This setting enables/disables ambient room lighting using LDR

Note: - Disabling LDR motion sensor will detect and **OUT-1** will operate irrespective of ambient light conditions.

Sr. no.	DIP3-SW3	LDR - light sensing	OUT-1 Behaviour
1	OFF	Disabled	<b>OUT-1</b> does not depend on the ambient lighting
2	ON	Enabled	<b>OUT-1</b> depend on the ambient lighting as per LDR light detection setting(SW4-DIP3).

7



**LDR-Enable OUT-2 setting: -**

(Using SW-4 of DIP3)

This setting enables/disables ambient room lighting using LDR

Note: - Disabling LDR motion sensor will detect and **OUT-2** will operate irrespective of ambient light conditions.

Sr. no.	DIP3-SW4	LDR - light sensing	OUT-2 Behaviour
1	OFF	Disabled	<b>OUT-2</b> does not depend on the ambient lighting
2	ON	Enabled	<b>OUT-2</b> depend on the ambient lighting as per LDR light detection setting(SW4-DIP3).